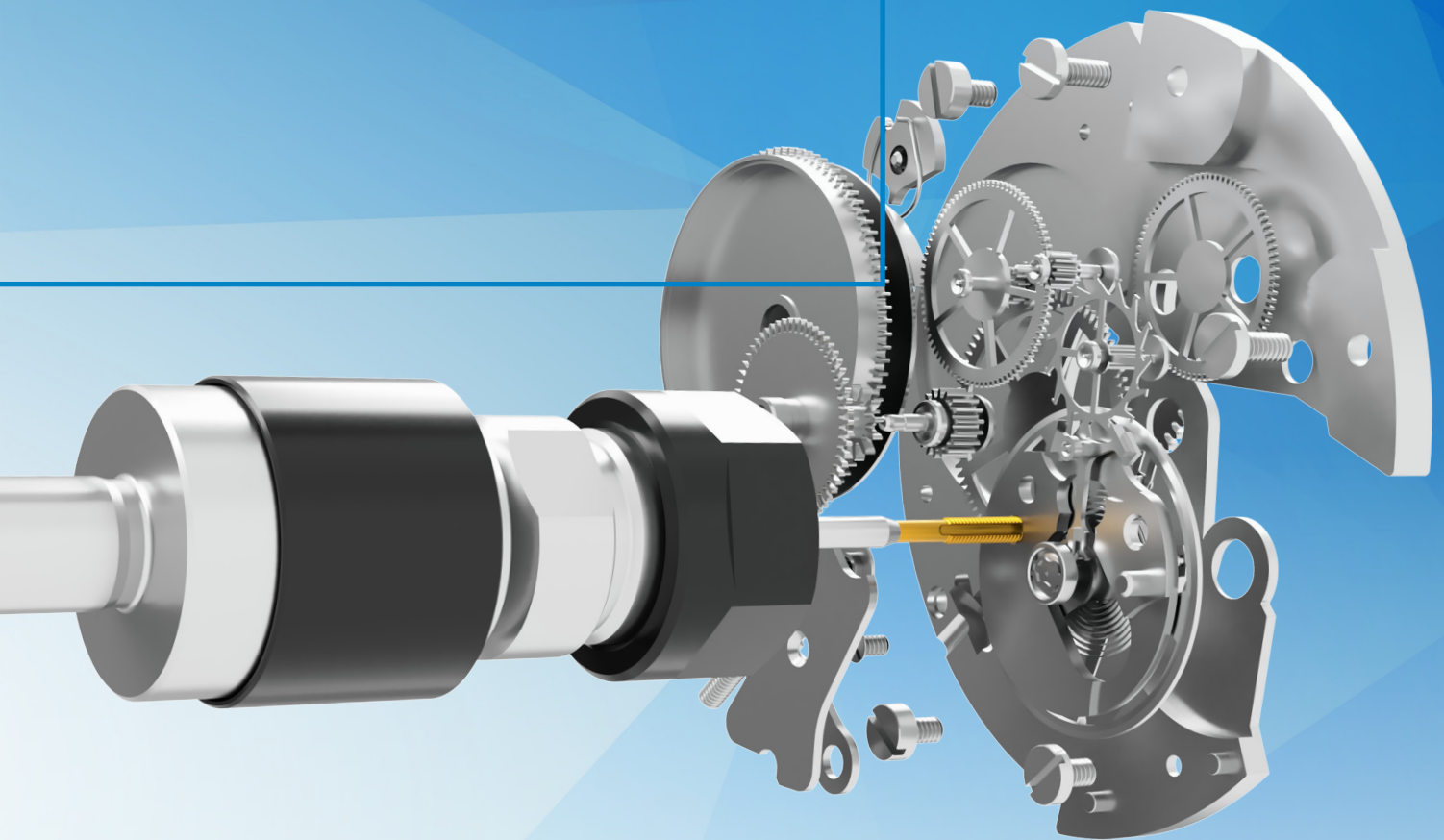


Nano Synchro

Tapping with both,
„Forming and Cutting taps“
M0.5 to M4



Electronic



Visual optics



Precision
engineering



Toolmaking

Features

- Minimum tension and compression compensation
- Ball bearing technology, (application without turning moment) dampening
- Suitable for cutting and forming taps
- Suitable for right and lefthand threads
- Optimised spring and dampening compensation (+/- 0,5mm)
- Suited for external coolant supply



Advantages

- Highest process stability
- Extended tapping tool-life
- Improved thread quality
- Reduction of thread flank cutting pressures
- Compensates spindle synchronisation errors.

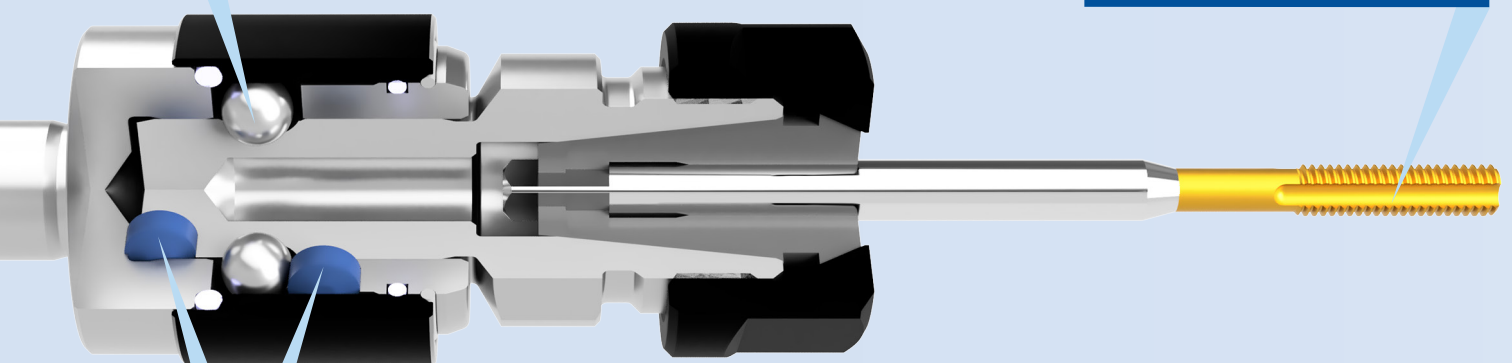
FINEST TECHNOLOGY IN HIGHEST PRECISION

Extreme short build size, 80mm overall length, this reflects the same build-size as previous synchro chucks, (no reprogramming necessary). Highest technology precision for your applications.



Ball bearing technology, (application without turning moment) dampening

Thread cutting and forming
M0.5 to M4



Optimised spring and dampening compensation
(+/- 0.5mm)

Thermogrip®
Shrink Chucks
Catalogue



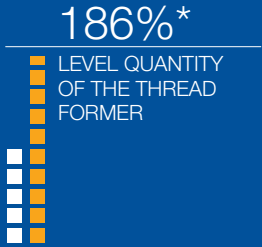
CNC
Catalogue



Flexible applications



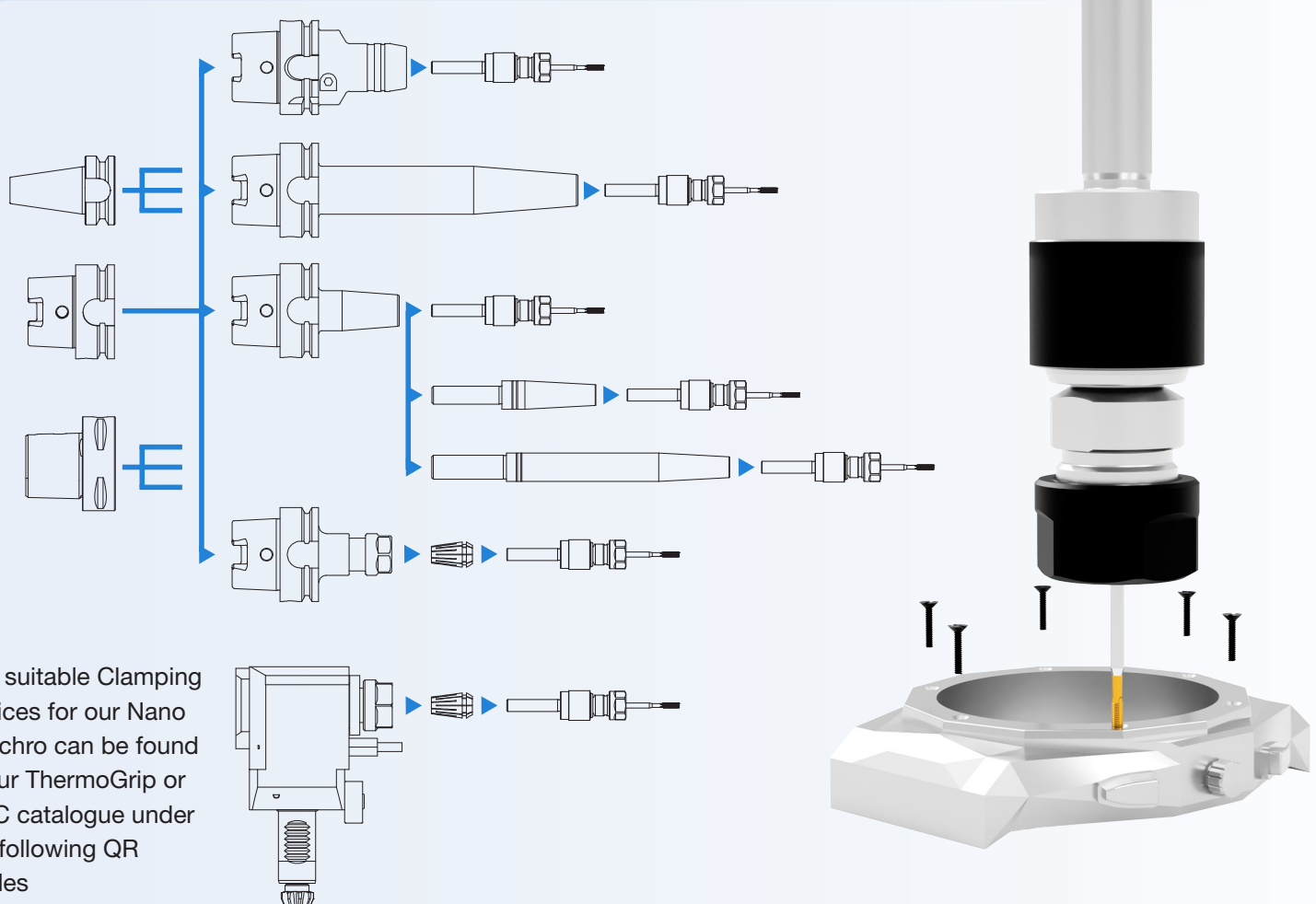
Our Nano Synchro tapping chuck can be applied as a collet chuck for driven aggregates, does not need to be clamped directly in the machine spindle.



* Up to 186% tool life of the M1 Thread former, determined in the endurance test with $n=1000 \text{ min}^{-1}$ in X5CrNi 18-10 with the Nano Synchro chuck compared to 100% of a standard collet chuck.

MECHANICAL CLAMPING, SHRINKING OR SELF LOCKING

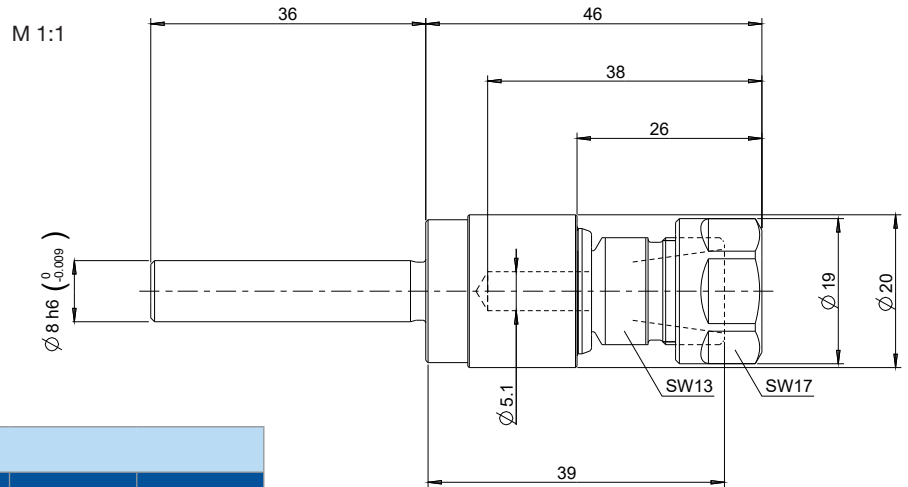
Many possibilities to use our Nano Synchro chuck in your current process strategy.



The suitable Clamping devices for our Nano Synchro can be found in our ThermoGrip or CNC catalogue under the following QR Codes

Nano Synchro

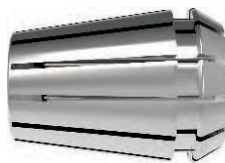
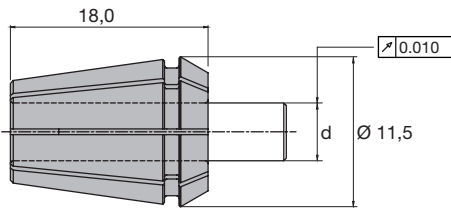
Thread forming and cutting M0.5 to M4



| Nano Synchro | | | |
|--------------|----------------------|-----------|--------|
| | Description | Ident No. | |
| M0,5 - M4 | S3D0-ER11-44-N-Z0800 | 5200109 | +/-0,5 |

For further information can be found on www.bilz.com

Accessories:



| Tap | | | | Collets DIN 6499 System ER11 | |
|---------|-----------|---------|-----------------|------------------------------|-----------|
| | | JIS | Shank Ø (mm) | Clamping range d (mm) | Ident No. |
| DIN 371 | DIN 376 | | | | |
| | | | | Ø 1.0 - Ø 0.5 | 5056179 |
| | M1,6-M1,8 | | Ø 1,2 | Ø 2.0 - Ø 1.0 | 5056181 |
| | M2 | | Ø 1,4 | | |
| | M2,2-M2,3 | | Ø 1,6 | | |
| | M2,5-M2,6 | | Ø 1,8 | | |
| | M3 | | Ø 2,2 | Ø 3.0 - Ø 2.0 | 5056182 |
| M1-M1,8 | M3,5 | | Ø 2,5 x □ 2,1 | | |
| M2-M2,6 | M4 | | Ø 2,8 x □ 2,1 | | |
| | | M1-M2,6 | Ø 3,0 x □ 2,5 | Ø 4.0 - Ø 3.0 | 5056184 |
| M3 | | | Ø 3,5 x □ 2,7 | | |
| M3,5 | | | Ø 4,0 x □ 3,0 | | |
| | | M3 | Ø 4,0 x □ 3,2 | Ø 5.0 - Ø 4.0 | 5056187 |
| M4 | | | Ø 4,5 x □ 3,4 | | |
| | | M4 | Ø 5,0 x □ 4,0 | | |